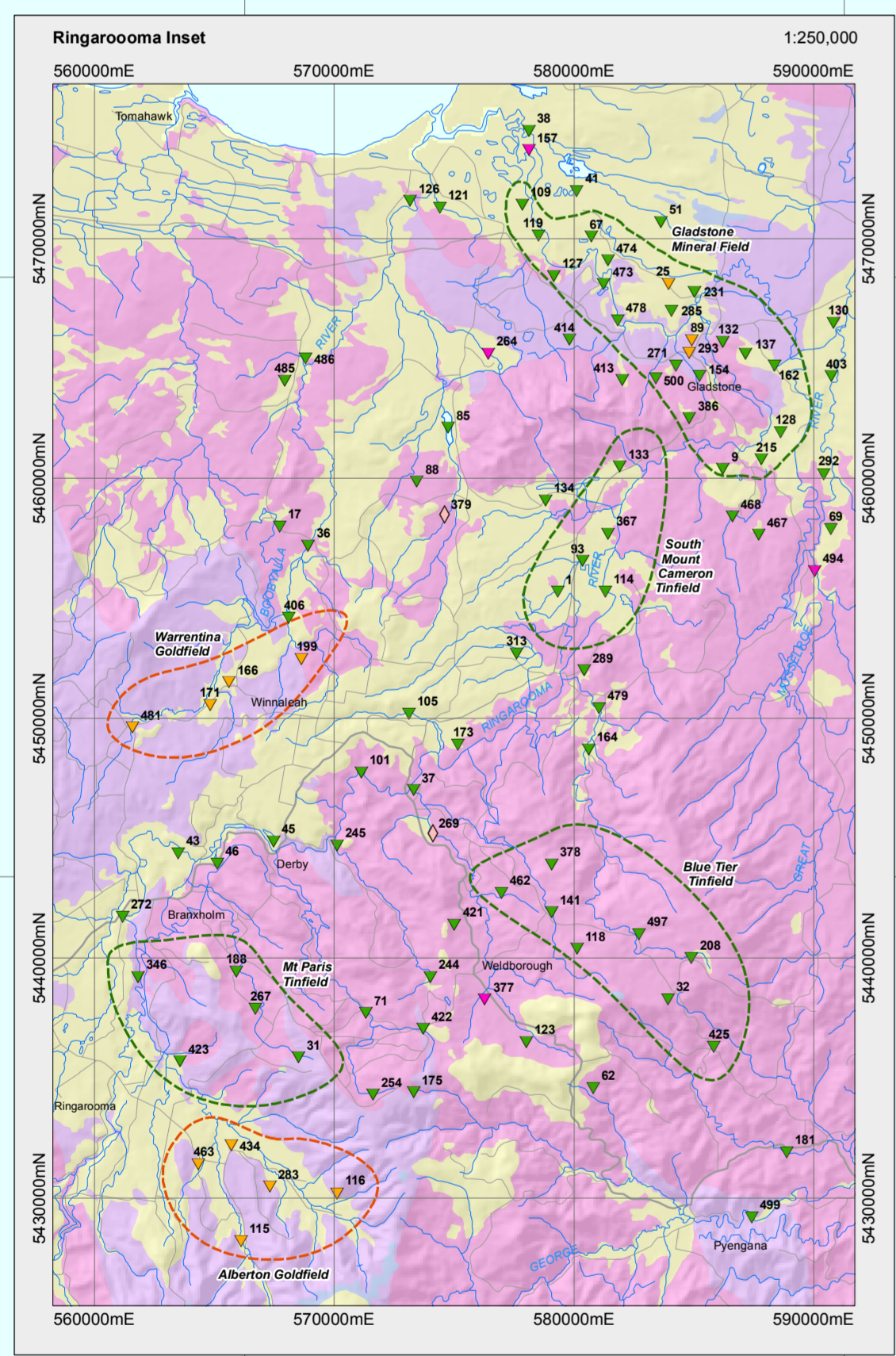


ALLUVIAL MINERAL OCCURRENCES OF TASMANIA

INDEX OF OCCURRENCES

No.	REF. No.	NAME	COMMODITY	EASTING	NORTHING	No.	REF. No.	NAME	COMMODITY	EASTING	NORTHING	No.	REF. No.	NAME	COMMODITY	EASTING	NORTHING	No.	REF. No.	NAME	COMMODITY	EASTING	NORTHING	No.	REF. No.	NAME	COMMODITY	EASTING	NORTHING
1	1280	A.B.C. Creek	Ta	57810	546320	101	1205	Conroy Dam	Unconformable (PGE) Gold	57130	547220	201	2213	Kepper Creek	Unconformable (PGE) Ta	54810	539800	301	2221	Oranmore Creek	Ta	58130	537800	401	1940	Tea-tree Creek	Ta	58130	537800
2	2774	Alpine Creek	Unconformable (PGE) Gold	48510	535100	102	1206	Conroy Dam	Unconformable (PGE) Gold	57130	547220	202	2214	Kepper Creek	Unconformable (PGE) Ta	54810	539800	302	2222	Oranmore Creek	Ta	58130	537800	402	1941	Tea-tree Creek	Ta	58130	537800
3	2775	Alpine Creek	Unconformable (PGE) Gold	48510	535100	103	1207	Conroy Dam	Unconformable (PGE) Gold	57130	547220	203	2215	Kepper Creek	Unconformable (PGE) Ta	54810	539800	303	2223	Oranmore Creek	Ta	58130	537800	403	1942	Tea-tree Creek	Ta	58130	537800
4	2776	Alpine Creek	Unconformable (PGE) Gold	48510	535100	104	1208	Conroy Dam	Unconformable (PGE) Gold	57130	547220	204	2216	Kepper Creek	Unconformable (PGE) Ta	54810	539800	304	2224	Oranmore Creek	Ta	58130	537800	404	1943	Tea-tree Creek	Ta	58130	537800
5	2777	Alpine Creek	Unconformable (PGE) Gold	48510	535100	105	1209	Conroy Dam	Unconformable (PGE) Gold	57130	547220	205	2217	Kepper Creek	Unconformable (PGE) Ta	54810	539800	305	2225	Oranmore Creek	Ta	58130	537800	405	1944	Tea-tree Creek	Ta	58130	537800



MINERAL OCCURRENCES LEGEND

ALLUVIAL MINERAL OCCURRENCES

- Gold
- Tin
- Tungsten (Wolframite)
- Osmium-Iridium (Osminidium)
- Platinum-Gold
- Chromium (Chromite)
- Heavy Minerals (Rutile, Ilmenite, Zircon)
- Gems (Topaz, Sapphire, Zircon)

ALLUVIAL MINERAL FIELDS

- Gold
- Osmium-Iridium (Osminidium)
- Tin

GEOLOGICAL LEGEND

- Jurassic to Holocene sequences and intrusive rocks
- Late Carboniferous to Triassic sequences (Parmeene Supergroup)
- Early Devonian to Early Carboniferous granitic and pyroclastic rocks
- Early Ordovician to Early Devonian turbidite sequences, NE Tasmania (Mathinna Supergroup)
- Late Cambrian to Early Devonian sedimentary sequences (Urawurra Supergroup)
- Middle to Late Cambrian volcaniclastic rocks, lavas and intrusives (Mt Read Volcanics), and associated sedimentary sequences
- Allochthonous Early Cambrian mafic-ultramafic complexes and sedimentary sequences
- Proterozoic schist, phyllite, amphibolite with minor dolomite and magnetite; Cambrian metamorphic age (Arthur Metamorphic Complex)
- Metoproterozoic to Neoproterozoic marine shelf, turbidite, and rift sequences and metasediments
- Neoproterozoic granite

SCALE 1:500,000
GDA94, MOA Zone 55

